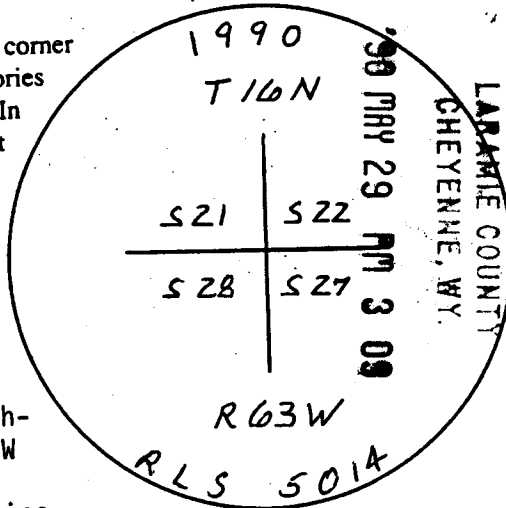


Wyoming Certified Land Corner Recordation Certificate

This form is to be completed in accordance with W.S. 36-11-101, printed in black ink or typed, and shall be for one individual corner.

Describe below, or show in sketch attached to this form, the corner evidence found. Include condition and type of monument, accessories and ties. Describe any maintenance or rehabilitation performed. In the circle to the right, show monument inscription. If monument is determined lost or obliterated, restate the GLO or BLM original field note record; describe or show the procedure used to reestablish the corner and all data as above for a found monument.



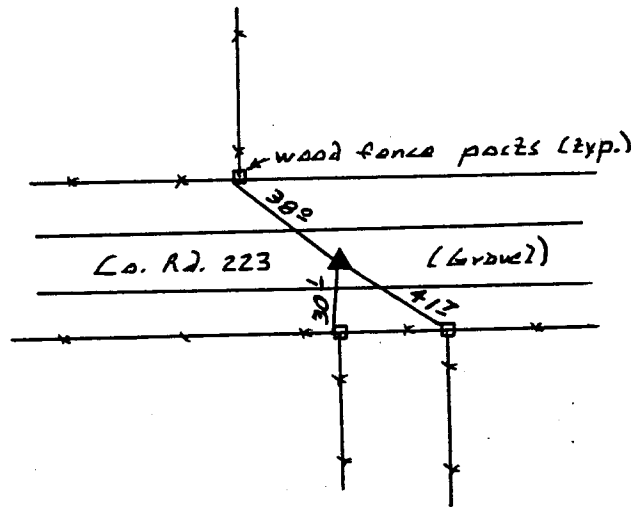
Field Date 4-11-90 Office Reference _____

After extensive field search, it was determined the best evidence for the re-establishment of the corner was the center of the ROW fences of County Road 223 and a northerly extension of a fence line on the easterly line of the N1/2 NE1/4 NE1/4 of Section 28.

GLO notes attached.

Monument set: #5 rebar with 2" aluminum cap stamped as shown; 6" below gravel road.

References: P-K nails with 1-1/2" galvanized washers stamped "5014".



State of Wyoming
Office of County Clerk
County of Laramie

This Certified Land Corner Recordation Certificate was filed for record on the _____ day of _____, 19 __, in Book No. T _____, R _____, on Alpha-Numeric coordinates R-13 and was noted on the Cross Index Plat.

County Clerk

Corner Type: Aliquot Corner Other
Section(s) 22 Meridian 63W
Corner Name Section Township 16N Range 63W Page _____

Sheet 1 of 3

**Directions for using the
Cross Index Plat**

Section, quarter and sixteenth corners will be marked with a dot at the corner location. The alpha-numeric coordinate number is then determined for the intersection of the two lines. A corner that applies to two or more townships shall be filed under all that apply by the use of photo copies.

Closing corners will be indexed under the township in which they control ownership. For 1/64, 1/256, 1/1024 and non-aliquot corners lying between grid designations, mark the appropriate grid area with a dot and use the index code to the north and west (local systems may be used if the method is approved by the County Surveyor or Clerk and a written description of its use is filed in the front of each book of certificates).

Cross Index Plat

	1	2	3	4	5	6	7	8	9	10	11	12	13	14	15	16	17	18	19	20	21	22	23	24	25	26	
A																											
B																											
C		6																									
D																											
E																											
F																											
G		7																									
H																											
I																											
J																											
K																											
L		10																									
M																											
N																											
O																											
P		19																									
Q																											
R																											
S																											
T		30																									
U																											
V																											
W																											
X		31																									
Y																											
Z																											
	1	2	3	4	5	6	7	8	9	10	11	12	13	14	15	16	17	18	19	20	21	22	23	24	25	26	

State Plane Coordinates (optional)

Zone W WC EC E feet/meters

NAD 1927 NGVD 1929 NAD 1983 NAVD 1988

North (Y) = _____ East (X) = _____ EL = _____

Latitude _____ Longitude _____

Scale Factor _____ Geoid Height _____

Certification

I, Raymond E. Connin, Wyoming PLS-~~RF~~^{XX} 5014 certify that I, or others under my supervision, have performed the work as described above and completed this form.

Company or Agency Hall & Walters, Inc.

Mailing Address _____

Street Address 873 North Cleveland

City, State, ZIP Loveland, CO 80537

Telephone, FAX 303-663-1177



Raymond E. Connin
Signature, Seal, and Date

143 75

Shewship 16 North Range 63 W

Claim Best on a Revision line

between sections 21 & 24

variation 15.35 E

40.00 set a granite boulder 17x8x6

for temporary 1/4 section corner

19.611 (intersect) 21-5 line 60 links

North of corner to sections 26 & 27

21 & 25 from which corner 1 run

S 89° 31' W by a true line

between sections 21 & 24

39.82 set a granite boulder 19x8x6

for quarter section corner

19.614 Corner to sections 21, 28, 23 & 24

Some setting Nail 2nd pole

graves spot

North between sections 21 & 25

variation 15.40 E

40.00 set a granite boulder 18x7x5

for quarter section corner

80.00 set a granite boulder 19x8x6

75 144

Shewship 16 North Range 63 West

Claim for corner to sections 21, 22 & 23

Some level Nail 2nd pole graves spot

variation 15.40 E

Best on a Revision line

between sections 22 & 23

variation 15.40 E

40.00 set a temporary 1/4 section corner

intersect 21-5 line 70 links

North of corner to sections 22 & 23

26 & 27 from which corner 1 run

S 89° 30' W by a true line

between sections 22 & 23

39.771 set a granite boulder 15x7x6

for quarter section corner

Corner to sections 21, 22, 21 & 28

Some setting Nail 2nd pole

graves spot

*

40.00

80.00

40.00

19.6

89.75

153

154

155

1111

1852 1000